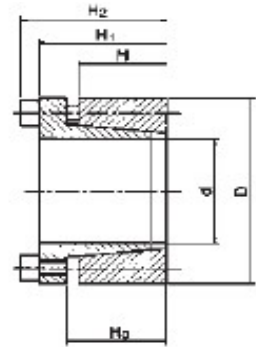
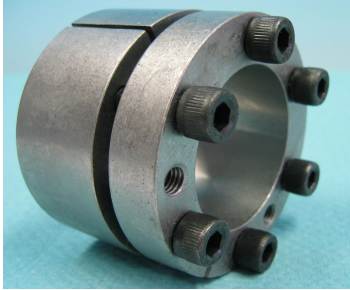


Upínací pouzdra CAL

Typ SIT-LOCK 6


CAL 6 / SIT-LOCK 6

| Označení | Rozměry | | | | Kruticí moment M_t (Nm) | Axiální síla P_{ax} (kN) | Tlak na hřídel P_W (MPa) | Tlak na náboj P_N (MPa) | Upínací šrouby | | |
|------------------|---------------|-----------|------------------------|------------------------|---------------------------------|----------------------------------|----------------------------------|---------------------------------|------------------------|---------------|----------------|
| | d x D (mm) | H (mm) | H ₀ (mm) | H ₁ (mm) | | | | | H ₂ (mm) | Počet (ks) | Typ DIN 912 |
| 20 x 47 | 17 | 22 | 28 | 34 | 380 | 38 | 295 | 125 | 5 | M 6 | 14 |
| 22 x 47 | 17 | 22 | 28 | 34 | 410 | 38 | 270 | 125 | 5 | M 6 | 14 |
| 24 x 50 | 17 | 22 | 28 | 34 | 450 | 38 | 245 | 120 | 5 | M 6 | 14 |
| 25 x 50 | 17 | 22 | 28 | 34 | 570 | 45,6 | 285 | 140 | 6 | M 6 | 14 |
| 28 x 55 | 17 | 22 | 28 | 34 | 630 | 45,6 | 255 | 130 | 6 | M 6 | 14 |
| 30 x 55 | 17 | 22 | 28 | 34 | 660 | 45,6 | 235 | 130 | 6 | M 6 | 14 |
| 32 x 60 | 17 | 22 | 28 | 34 | 970 | 60,5 | 295 | 155 | 8 | M 6 | 14 |
| 35 x 60 | 17 | 22 | 28 | 34 | 1060 | 60,5 | 270 | 155 | 8 | M 6 | 14 |
| 38 x 65 | 17 | 22 | 28 | 34 | 1150 | 60,5 | 250 | 145 | 8 | M 6 | 14 |
| 40 x 65 | 17 | 22 | 28 | 34 | 1210 | 60,5 | 235 | 145 | 8 | M 6 | 14 |
| 42 x 75 | 20 | 25 | 33 | 41 | 2050 | 98 | 300 | 170 | 7 | M 8 | 35 |
| 45 x 75 | 20 | 25 | 33 | 41 | 2200 | 98 | 290 | 170 | 7 | M 8 | 35 |
| 48 x 80 | 20 | 25 | 33 | 41 | 2350 | 98 | 270 | 160 | 7 | M 8 | 35 |
| 50 x 80 | 20 | 25 | 33 | 41 | 2450 | 98 | 260 | 160 | 7 | M 8 | 35 |
| 55 x 85 | 20 | 25 | 33 | 41 | 3080 | 112 | 270 | 175 | 8 | M 8 | 35 |
| 60 x 90 | 20 | 25 | 33 | 41 | 3360 | 112 | 245 | 165 | 8 | M 8 | 35 |
| 65 x 95 | 20 | 25 | 33 | 41 | 4090 | 126 | 255 | 175 | 9 | M 8 | 35 |
| 70 x 110 | 24 | 30 | 40 | 50 | 6300 | 179 | 280 | 180 | 8 | M 10 | 70 |
| 75 x 115 | 24 | 30 | 40 | 50 | 6700 | 179 | 260 | 170 | 8 | M 10 | 70 |
| 80 x 120 | 24 | 30 | 40 | 50 | 7150 | 179 | 250 | 170 | 8 | M 10 | 70 |
| 85 x 125 | 24 | 30 | 40 | 50 | 8500 | 200 | 260 | 180 | 9 | M 10 | 70 |
| 90 x 130 | 24 | 30 | 40 | 50 | 9100 | 200 | 250 | 170 | 9 | M 10 | 70 |
| 95 x 135 | 24 | 30 | 40 | 50 | 10600 | 224 | 260 | 180 | 10 | M 10 | 70 |
| 100 x 145 | 26 | 32 | 44 | 56 | 13400 | 268 | 270 | 190 | 8 | M 12 | 125 |
| 110 x 155 | 26 | 32 | 44 | 56 | 14600 | 268 | 240 | 180 | 8 | M 12 | 125 |
| 120 x 165 | 26 | 32 | 44 | 56 | 17900 | 298 | 250 | 180 | 9 | M 12 | 125 |
| 130 x 180 | 34 | 40 | 54 | 64 | 26000 | 400 | 240 | 170 | 12 | M 12 | 125 |
| 140 x 190 | 34 | 40 | 54 | 68 | 27000 | 384 | 210 | 150 | 9 | M 14 | 190 |
| 150 x 200 | 34 | 40 | 54 | 68 | 33000 | 440 | 230 | 170 | 10 | M 14 | 190 |
| 160 x 210 | 34 | 40 | 54 | 68 | 38000 | 479 | 230 | 170 | 11 | M 14 | 190 |
| 170 x 225 | 44 | 50 | 64 | 78 | 45000 | 530 | 180 | 130 | 12 | M 14 | 190 |
| 180 x 235 | 44 | 50 | 64 | 78 | 47000 | 530 | 170 | 130 | 12 | M 14 | 190 |
| 190 x 250 | 44 | 50 | 64 | 78 | 62900 | 660 | 210 | 150 | 15 | M 14 | 190 |
| 200 x 260 | 44 | 50 | 64 | 78 | 66000 | 660 | 190 | 150 | 15 | M 14 | 190 |